



Wilberfoss Park Hull Road, York, YO41 5PF

Guide Price £65,000





## Lodge 7, Wilberfoss Park Hull Road, York, YO41 5PF

**£65,000**

BRAND NEW TWO BEDROOM LODGE HOME ON A CORNER PLOT

Set on this lovely 52 WEEK LICENCE PARK near the popular village of Wilberfoss with close proximity to York City Centre and the stunning East Yorkshire countryside.

Set in a fabulous position on the site, it fully comprises entrance hallway, open plan kitchen with modern units and integrated appliances, lounge/dining area with French doors onto large timber deck, two good double bedrooms and a modern three piece shower room.

To the outside is a wrap-around decked area with lawned garden and parking  
An internal viewing is highly recommended to appreciate this stunning lodge! FINANCE AVAILABLE!



## Description

Entrance Hallway

Open Plan Living/Dining

Kitchen Area

Bedroom 1

Bedroom 2

Shower Room



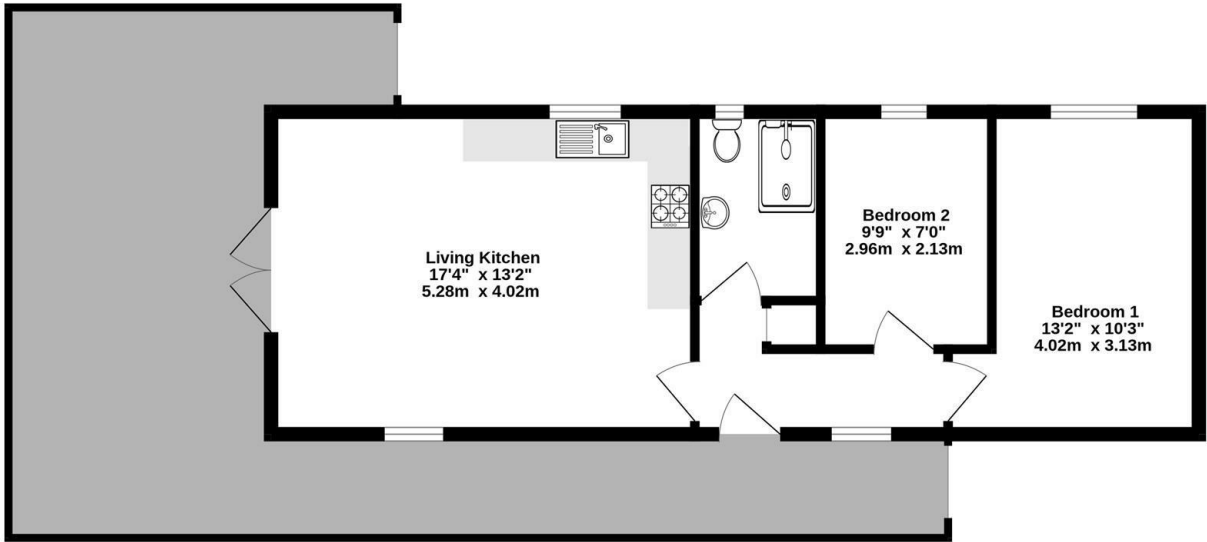
## Features

- Ideal Holiday Let Or Weekend Retreat!
- Two Double Bedrooms
- New 52 Week Licence Holiday Park
- Viewing Highly Recommended



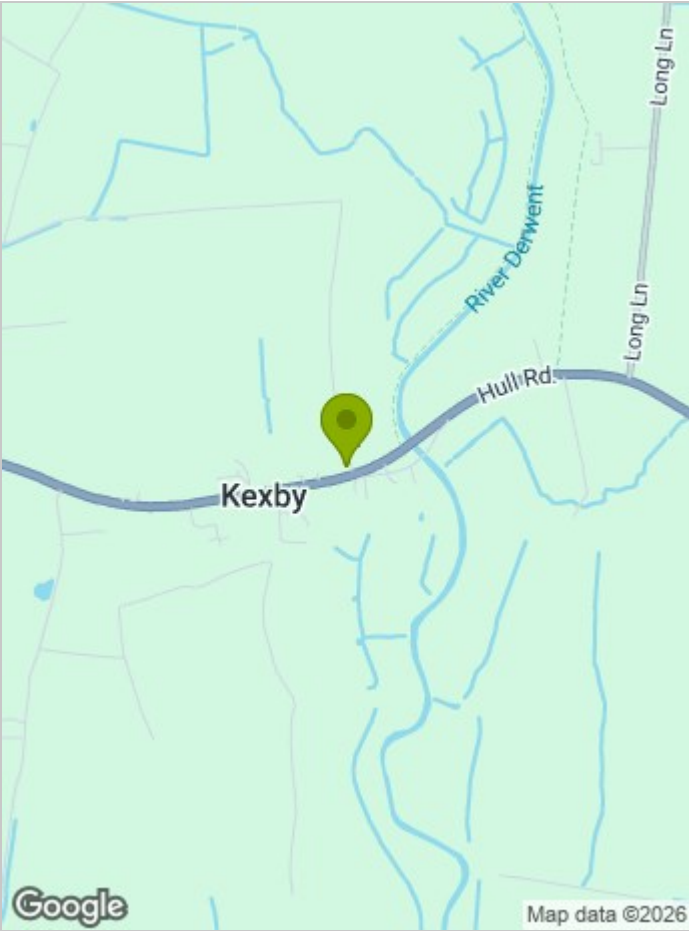
FLOOR PLAN

Ground Floor



Whilst every attempt has been made to ensure the accuracy of the floorplan contained here, measurements of doors, windows, rooms and any other items are approximate and no responsibility is taken for any error, omission or mis-statement. This plan is for illustrative purposes only and should be used as such by any prospective purchaser. The services, systems and appliances shown have not been tested and no guarantee as to their operability or efficiency can be given.  
Made with Metropix ©2026

LOCATION



EPC

These particulars, whilst believed to be accurate are set out as a general outline only for guidance and do not constitute any part of an offer or contract. Intending purchasers should not rely on them as statements of representation of fact, but must satisfy themselves by inspection or otherwise as to their accuracy. No person in this firms employment has the authority to make or give any representation or warranty in respect of the property.